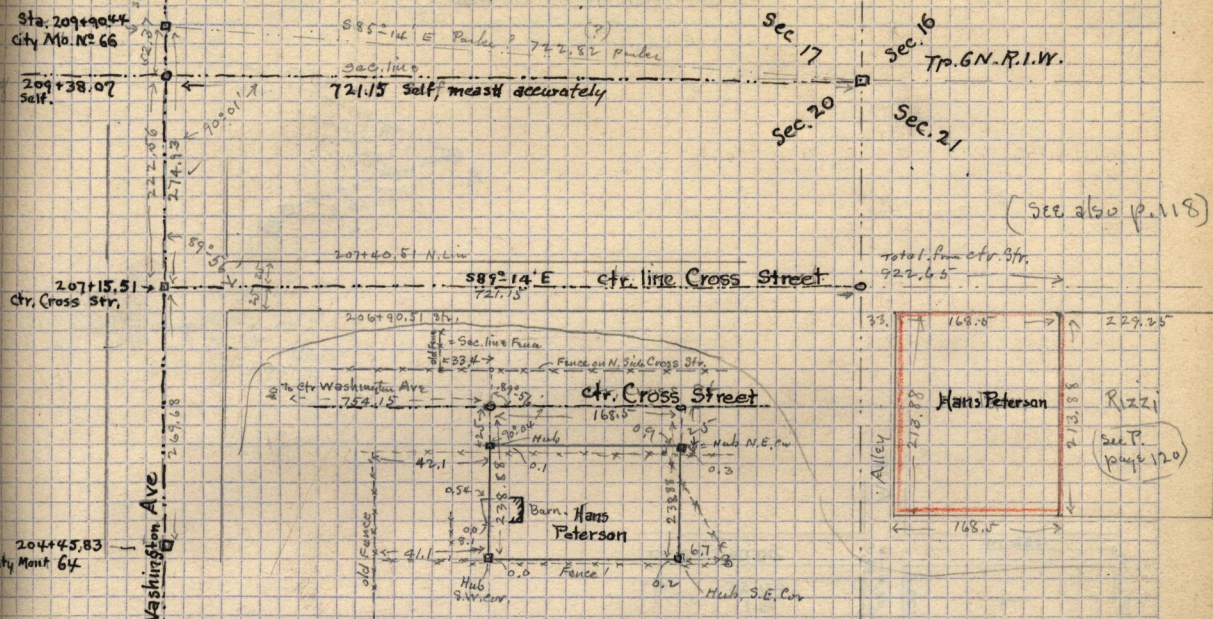


June 4-1907  
 511 - p. 540 dead  
 Bertha Harris to Hans Peterson & Rartha Peterson, Pt. N.W. 1/4 Sec. 21 - T. 6 N. - R. 1 W.  
 Beg. at a point 247.15 ft. S. and 33. ft. E. from N.W. cor. 1/4 Sec. Thence E. 168.5 ft.  
 S 213.88 ft. - W 163.5 ft. - N 213.88 ft. to beg. also a right of way for wagon way  
 over. Beg. 247.75 ft. S. from N.W. cor. 1/4 Sec. - S 213.88 ft. E 33. ft. N 213.88 ft. W  
 33. ft. to beg. 93

See page 41 - for survey in this vicinity



This Survey made for Hans Peterson June 19-1907 - Self, Stowe + Tom Jenkins.

June 4 - 1907 Survey for Montgomery

Traverse table of the Clark tract described on page 92 opposite  
 Beg. at N.W. cor. of tract.

Course	Obs.	N	S	E	W	Gain	Loss
S 37° 45' W	3.70		✓ 3.692		1.0242	0.654	79786
N 68° 15' W	3.25	✓ 1.1204			✓ 3.1015	92851	37056
S 1° 45' W	9.423		✓ 9.425		✓ .287	0.3054	79953
W	4.94						
N	3.87						
W	6.95						
N	8.01						
N 89° 45' E	15.86						
						99999	00000

to point 11.9139 + 3.547 W. of beg.  
 or 15.302 ch. S + 10.092 ch. E. of 1st cor.  
 (See description on slides)

